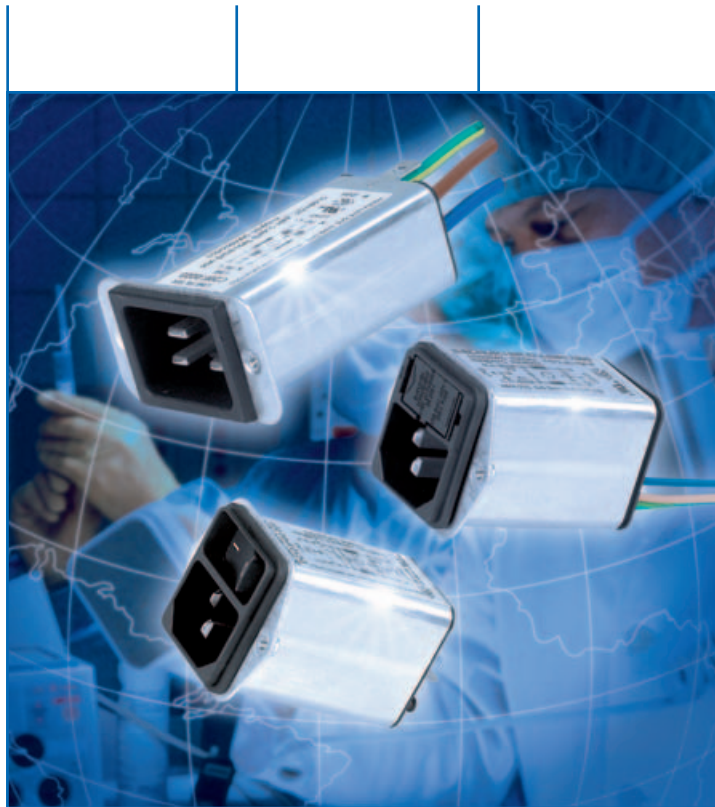


POWER ENTRY MODULE WITH LINE FILTER

TYPES C20F / DC12 / KFA



Metal Flange Versions

CONNECTORS

Actual information about approvals can be found on
<http://www.schurter.com/approvals>



Screw-on mounting
from front side



Snap-in mounting
from front side



New
Screw-on mounting
from rear side
with wires (stranded)

C20



70° C



Standard- or Medical-Filter

Description

- Panel Mount:
Screw-on version from front or rear side, snap-in version from front side
- 2 Functions:
Inlet Protection class I, Line filter in standard and medical version
- Solder, quick connect or wires (stranded)

Characteristics

- Compact design with optimal shielding
Suitable for assembly in metal plated plastic housings
- Version with class X1 and X2 (standard version) capacitors
- Universal line filter for standard applications
Designed for standard and medical applications
- Qualified for use in equipment according IEC/EN 60950

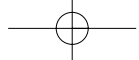
Other versions on request

- Other rated currents

Technical Data

Ratings IEC	16 A @ Ta 40 °C / 250 VAC; 50 Hz
Ratings UL/CSA	20 A @ Ta 40 °C / 250 VAC; 60 Hz
Leakage current	standard < 0.5 mA (250 V / 60 Hz) medical < 5 µA (250 V / 60 Hz)
Dielectric Strength	> 1.7 kVDC between L-N (CX1, CX2) > 2.7 kVDC between L/N-PE (CX1, CX2) Test voltage (2 sec)
Impulse Withstand Voltage	> 2.5 kV between L-N (CX2) > 4 kV between L-N (CX1) > 5 kV between L/N-PE (CX1, CX2) voltage (1.2/50 µs)
Allowable operation temp.	-25 °C to 85 °C
Climatic Category	25/085/21, IEC 60068-1
Degree of Protection	from front side IP 40 acc. to IEC 60529
Protection Class	Suitable for appliances with protection class I acc. to IEC 61140
Terminals	Solder, quick connect or wires (stranded)
Panel Thickness s	Screw-on: max 8 mm Mounting screw torque max 0.5 Nm Snap-In: 1 mm to 3 mm
Material: Housing	Thermoplastic, Black, UL 94V-0

Appliance-inlet /-outlet	C20 acc. to IEC/EN 60320-1, UL 498, CSA C22.2 no. 42 (for cold condition) pin-temperature 70 °C, 16 A, Protection class I
Line filter	Standard and medical version, IEC 60939, IEC 60601-1, UL 1283, UL 544, EN 133 200, CSA C22.2 no. 8 Technical details see page 3



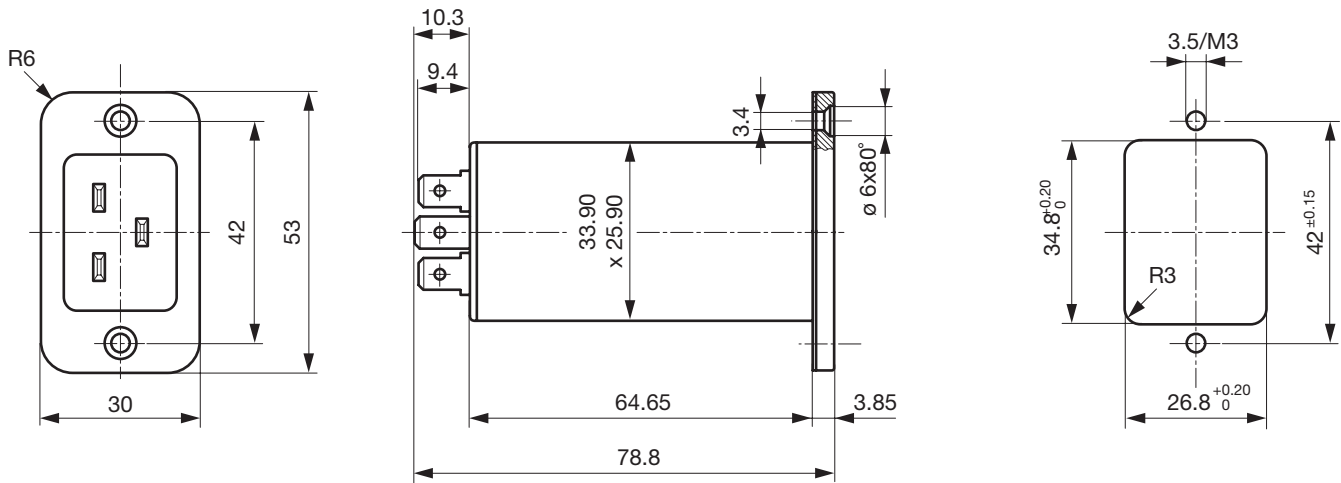
C20F

POWER ENTRY MODULES WITH LINE FILTER

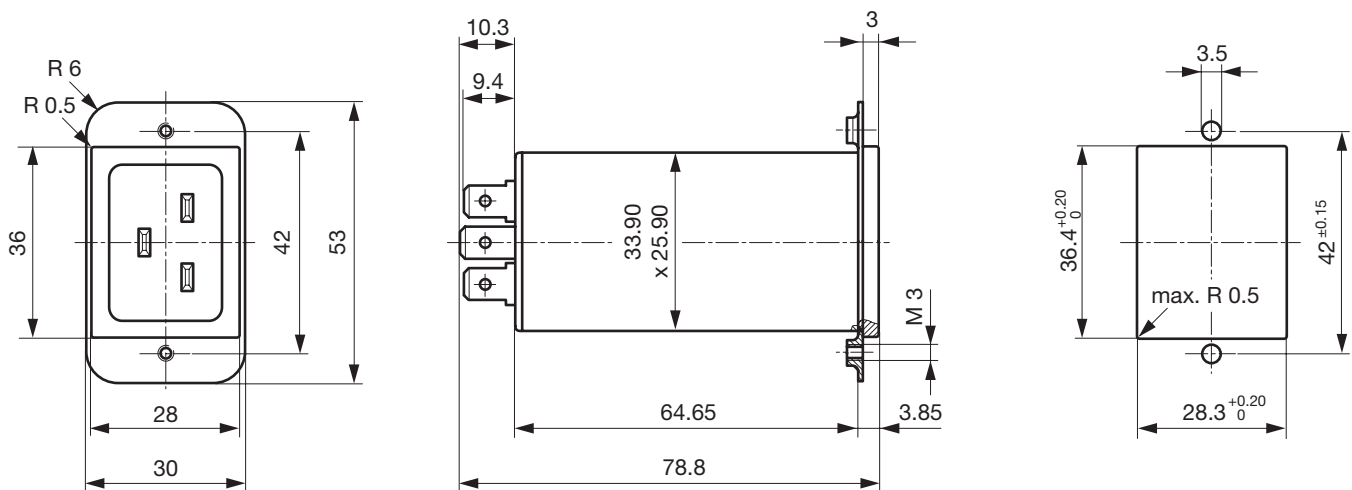


Dimensions

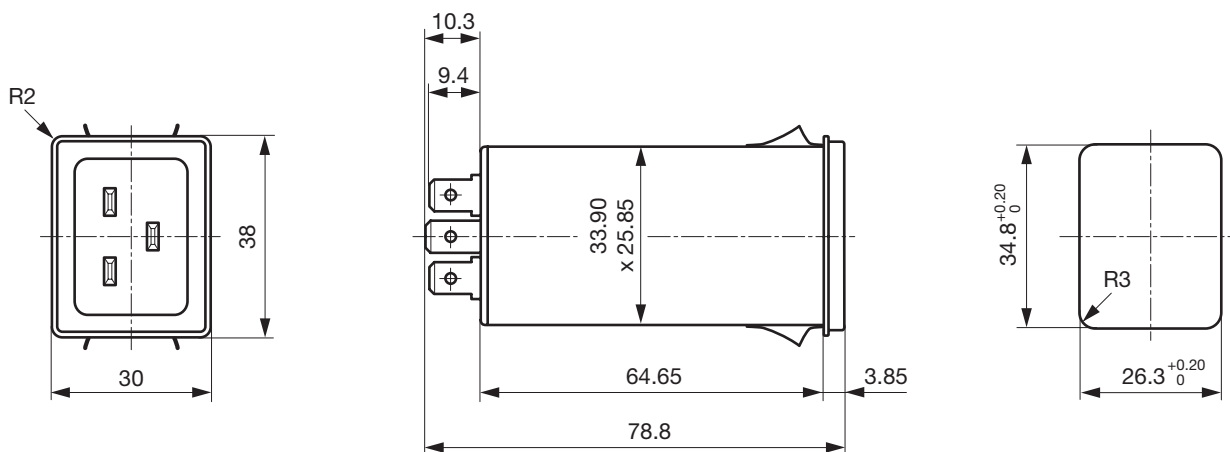
Screw-on mounting from front side



Screw-on mounting from rear side

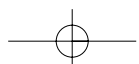


Snap-in mounting from front side



Technical Data of Filter-Components

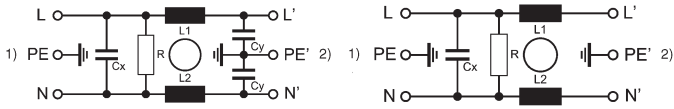
Rated Current [A]	Filter-Type	Inductances L [mH]	Capacitance CX [nF]	Capacitance CY [nF]	R [MΩ]
16	Standard Version	2 x 0.3	100	2.2	1
16	Medical Version (M5)	2 x 0.3	100		1
16	Medical Version (M80)	2 x 0.3	100	0.47	1



Diagrams

Standard or medical version (M80)

Medical version (M5)



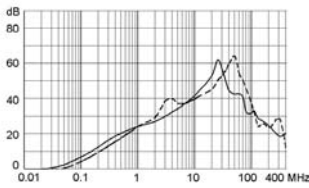
1) Line
2) Load

1) Line
2) Load

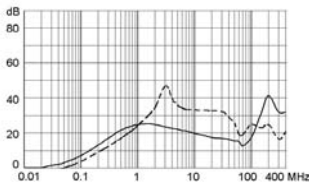
Attenuation loss

--- differential mode ____ common mode

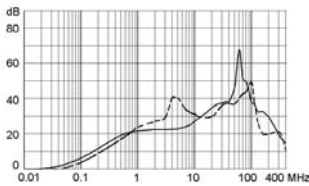
Standard version
20 A



Medical version (M5)
20 A



Medical version (M80)
20 A



Variants

Order Number	Rated Current IEC	Rated Current UL	Filter-Type	Panel mounting	Mounting side	Terminals	Capacitor
C20F.0111	16	20	Standard Version	Snap-In	Front-Side	Quick connect terminals 6.3 x 0.8 mm	X2
C20F.0113	16	20	Standard Version	Snap-In	Front-Side	Quick connect terminals 6.3 x 0.8 mm	X1
C20F.0011	16	20	Standard Version	Snap-In	Front-Side	Solder terminals	X2
C20F.0013	16	20	Standard Version	Snap-In	Front-Side	Solder terminals	X1
C20F.0101	16	20	Standard Version	Screw-on	Front-Side	Quick connect terminals 6.3 x 0.8 mm	X2
C20F.0103	16	20	Standard Version	Screw-on	Front-Side	Quick connect terminals 6.3 x 0.8 mm	X1
C20F.0001	16	20	Standard Version	Screw-on	Front-Side	Solder terminals	X2
C20F.0003	16	20	Standard Version	Screw-on	Front-Side	Solder terminals	X1
C20F.0221	16	20	Standard Version	Screw-on	Rear-Side	Wire 14 AWG	X2
C20F.0223	16	20	Standard Version	Screw-on	Rear-Side	Wire 14 AWG	X1
C20F.0121	16	20	Standard Version	Screw-on	Rear-Side	Quick connect terminals 6.3 x 0.8 mm	X2
C20F.0123	16	20	Standard Version	Screw-on	Rear-Side	Quick connect terminals 6.3 x 0.8 mm	X1
C20F.0021	16	20	Standard Version	Screw-on	Rear-Side	Solder terminals	X2
C20F.0023	16	20	Standard Version	Screw-on	Rear-Side	Solder terminals	X1
C20F.0112	16	20	Medical Version (M5)	Snap-In	Front-Side	Quick connect terminals 6.3 x 0.8 mm	X2
C20F.0114	16	20	Medical Version (M5)	Snap-In	Front-Side	Quick connect terminals 6.3 x 0.8 mm	X1

C20F

POWER ENTRY MODULES WITH LINE FILTER



Order Number	Rated Current IEC	Rated Current UL	Filter-Type	Panel mounting	Mounting side	Terminals	Capacitor
C20F.0012	16	20	Medical Version (M5)	Snap-In	Front-Side	Solder terminals	X2
C20F.0014	16	20	Medical Version (M5)	Snap-In	Front-Side	Solder terminals	X1
C20F.0102	16	20	Medical Version (M5)	Screw-on	Front-Side	Quick connect terminals 6.3 x 0.8 mm	X2
C20F.0104	16	20	Medical Version (M5)	Screw-on	Front-Side	Quick connect terminals 6.3 x 0.8 mm	X1
C20F.0002	16	20	Medical Version (M5)	Screw-on	Front-Side	Solder terminals	X2
C20F.0004	16	20	Medical Version (M5)	Screw-on	Front-Side	Solder terminals	X1
C20F.0222	16	20	Medical Version (M5)	Screw-on	Rear-Side	Wire 14 AWG	X2
C20F.0224	16	20	Medical Version (M5)	Screw-on	Rear-Side	Wire 14 AWG	X1
C20F.0122	16	20	Medical Version (M5)	Screw-on	Rear-Side	Quick connect terminals 6.3 x 0.8 mm	X2
C20F.0124	16	20	Medical Version (M5)	Screw-on	Rear-Side	Quick connect terminals 6.3 x 0.8 mm	X1
C20F.0022	16	20	Medical Version (M5)	Screw-on	Rear-Side	Solder terminals	X2
C20F.0024	16	20	Medical Version (M5)	Screw-on	Rear-Side	Solder terminals	X1
C20F.0125	16	20	Medical Version (M80)	Screw-on	Rear-Side	Quick connect terminals 6.3 x 0.8 mm	X2
C20F.0126	16	20	Medical Version (M80)	Screw-on	Rear-Side	Quick connect terminals 6.3 x 0.8 mm	X1
C20F.0025	16	20	Medical Version (M80)	Screw-on	Rear-Side	Solder terminals	X2
C20F.0026	16	20	Medical Version (M80)	Screw-on	Rear-Side	Solder terminals	X1

Packaging unit

20 Pcs

Accessories

see page 18

Actual information about approvals can be found on
<http://www.schurter.com/approvals>



Screw-on mounting
from front side

C14



70° C



Snap-in mounting
from front side



Screw-on mounting
from rear side



Standard- or Medical-Filter

Description

- Panel Mount:
Screw-on version from front or rear side, snap-in version from front side
- 3 Functions:
Inlet Protection class I, Line switch 1- or 2-pole, Line filter in standard and medical version
- Quick connect terminals 6.3 x 0.8 mm
- Alternative: version without line filter DC11
- Substitute for type KFB1, KFB2

Characteristics

- Compact design with optimal shielding
- Rear side mounting for efficient cost-saving assembly
- All single elements are already wired
- Line switch non-illuminated or illuminated
- Universal line filter for standard applications
- Ideal for application with high transient loads
- Qualified for use in equipment according IEC/EN 60950

Other versions on request

- solder terminals
- other rocker marking
- Capacitance CX1
- medical version M80

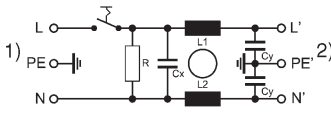
Technical Data

Ratings IEC	1 - 10 A @ Ta 40 °C / 250 VAC; 50 Hz
Ratings UL/CSA	1 - 10 A @ Ta 40 °C / 125 VAC; 60 Hz
Leakage current	standard < 0.5 mA (250 V / 60 Hz) medical < 5 µA (250 V / 60 Hz)
Dielectric Strength	> 1.7 kVDC between L-N > 2.7 kVDC between L/N-PE Test voltage (2 sec)
Allowable operation temp.	-25 °C to 85 °C
Climatic Category	25/085/21, IEC 60068-1
Degree of Protection	from front side IP 40 acc. to IEC 60529
Protection Class	Suitable for appliances with protection class I acc. to IEC 61140
Terminals	Quick connect terminals 6.3 x 0.8 mm
Panel Thickness s	Screw-on: max 8 mm Mounting screw torque max 0.5 Nm Snap-In: 1 mm to 3 mm
Material: Housing	Thermoplastic, Black, UL 94V-0

Appliance-inlet /-outlet	C14 acc. to IEC/EN 60320-1, UL 498, CSA C22.2 no. 42 (for cold condition) pin-temperature 70 °C, 10 A, Protection class I
Line switch	Rocker switch 1- or 2-pole, non-illuminated or illuminated, acc. to IEC 61058-1
Line filter	Standard and medical version, IEC 60939, IEC 60601-1, UL 1283, UL 544, EN 133 200, CSA C22.2 no. 8 Technical details see page 7

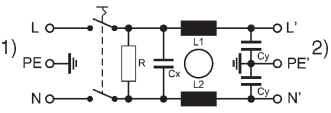
Diagrams

Standard filter 1-pole



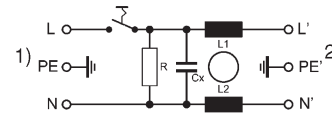
1) Line
2) Load

Standard filter 2-pole



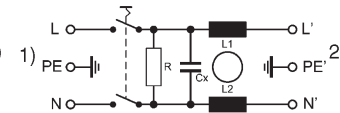
1) Line
2) Load

Medical filter 1-pole (M5)



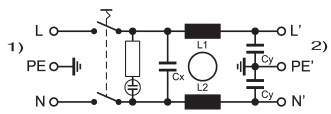
1) Line
2) Load

Medical filter 2-pole (M5)



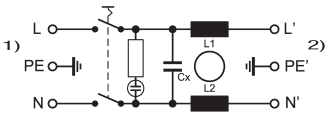
1) Line
2) Load

Standard filter 2-pole illuminated



1) Line
2) Load

Medical Filter 2-pole (M5) illuminated



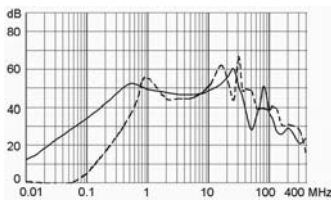
1) Line
2) Load

Attenuation loss

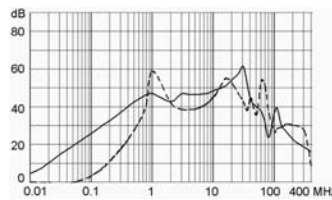
--- differential mode ____ common mode

Standard version

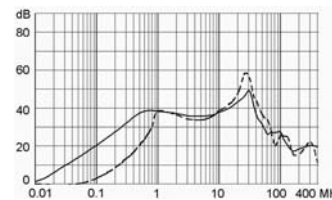
1 A



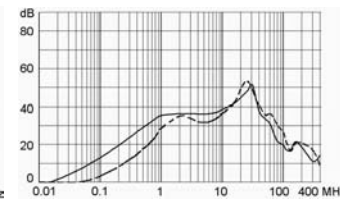
2 A



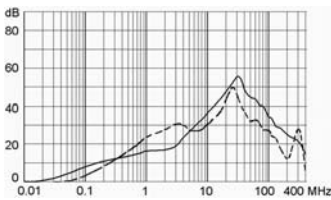
4 A



6 A

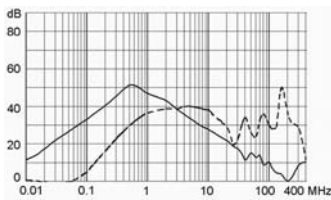


10 A

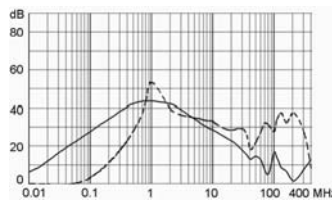


Medical version (M5)

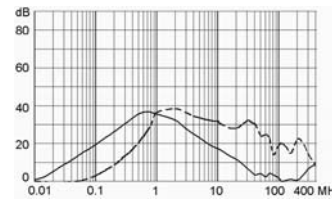
1 A



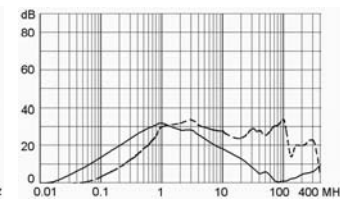
2 A



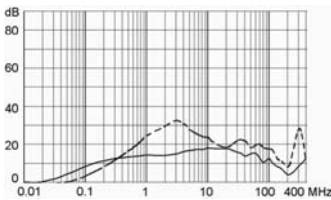
4 A



6 A



10 A



Variants

Order Number	Rated Current [A]	Filter-Type	Panel mounting	Mounting side	Line switch	Illumination	Color
DC12.1102.103	1	Standard Version	Snap-In	Front-Side	1-pole	non-illuminated	
DC12.2102.103	2	Standard Version	Snap-In	Front-Side	1-pole	non-illuminated	
DC12.3102.103	4	Standard Version	Snap-In	Front-Side	1-pole	non-illuminated	
DC12.4102.103	6	Standard Version	Snap-In	Front-Side	1-pole	non-illuminated	
DC12.5102.103	10	Standard Version	Snap-In	Front-Side	1-pole	non-illuminated	
DC12.1122.103	1	Standard Version	Snap-In	Front-Side	1-pole	illuminated	red
DC12.2122.103	2	Standard Version	Snap-In	Front-Side	1-pole	illuminated	red
DC12.3122.103	4	Standard Version	Snap-In	Front-Side	1-pole	illuminated	red
DC12.4122.103	6	Standard Version	Snap-In	Front-Side	1-pole	illuminated	red
DC12.1132.103	1	Standard Version	Snap-In	Front-Side	1-pole	illuminated	green
DC12.2132.103	2	Standard Version	Snap-In	Front-Side	1-pole	illuminated	green
DC12.3132.103	4	Standard Version	Snap-In	Front-Side	1-pole	illuminated	green
DC12.4132.103	6	Standard Version	Snap-In	Front-Side	1-pole	illuminated	green
DC12.5132.103	10	Standard Version	Snap-In	Front-Side	1-pole	illuminated	green
DC12.1102.101	1	Standard Version	Snap-In	Front-Side	2-pole	non-illuminated	
DC12.2102.101	2	Standard Version	Snap-In	Front-Side	2-pole	non-illuminated	
DC12.3102.101	4	Standard Version	Snap-In	Front-Side	2-pole	non-illuminated	
DC12.4102.101	6	Standard Version	Snap-In	Front-Side	2-pole	non-illuminated	
DC12.5102.101	10	Standard Version	Snap-In	Front-Side	2-pole	non-illuminated	
DC12.1122.101	1	Standard Version	Snap-In	Front-Side	2-pole	illuminated	red
DC12.2122.101	2	Standard Version	Snap-In	Front-Side	2-pole	illuminated	red
DC12.3122.101	4	Standard Version	Snap-In	Front-Side	2-pole	illuminated	red
DC12.4122.101	6	Standard Version	Snap-In	Front-Side	2-pole	illuminated	red
DC12.5122.101	10	Standard Version	Snap-In	Front-Side	2-pole	illuminated	red
DC12.1132.101	1	Standard Version	Snap-In	Front-Side	2-pole	illuminated	green
DC12.2132.101	2	Standard Version	Snap-In	Front-Side	2-pole	illuminated	green
DC12.3132.101	4	Standard Version	Snap-In	Front-Side	2-pole	illuminated	green
DC12.4132.101	6	Standard Version	Snap-In	Front-Side	2-pole	illuminated	green
DC12.5132.101	10	Standard Version	Snap-In	Front-Side	2-pole	illuminated	green
DC12.1102.003	1	Standard Version	Screw-on	Front-Side	1-pole	non-illuminated	
DC12.2102.003	2	Standard Version	Screw-on	Front-Side	1-pole	non-illuminated	
DC12.3102.003	4	Standard Version	Screw-on	Front-Side	1-pole	non-illuminated	
DC12.4102.003	6	Standard Version	Screw-on	Front-Side	1-pole	non-illuminated	
DC12.5102.003	10	Standard Version	Screw-on	Front-Side	1-pole	non-illuminated	
DC12.1122.003	1	Standard Version	Screw-on	Front-Side	1-pole	illuminated	red
DC12.2122.003	2	Standard Version	Screw-on	Front-Side	1-pole	illuminated	red
DC12.3122.003	4	Standard Version	Screw-on	Front-Side	1-pole	illuminated	red
DC12.4122.003	6	Standard Version	Screw-on	Front-Side	1-pole	illuminated	red
DC12.5122.003	10	Standard Version	Screw-on	Front-Side	1-pole	illuminated	red
DC12.1132.003	1	Standard Version	Screw-on	Front-Side	1-pole	illuminated	green
DC12.2132.003	2	Standard Version	Screw-on	Front-Side	1-pole	illuminated	green
DC12.3132.003	4	Standard Version	Screw-on	Front-Side	1-pole	illuminated	green
DC12.4132.003	6	Standard Version	Screw-on	Front-Side	1-pole	illuminated	green
DC12.5132.003	10	Standard Version	Screw-on	Front-Side	1-pole	illuminated	green
DC12.1102.001	1	Standard Version	Screw-on	Front-Side	2-pole	non-illuminated	
DC12.2102.001	2	Standard Version	Screw-on	Front-Side	2-pole	non-illuminated	
DC12.3102.001	4	Standard Version	Screw-on	Front-Side	2-pole	non-illuminated	
DC12.4102.001	6	Standard Version	Screw-on	Front-Side	2-pole	non-illuminated	
DC12.5102.001	10	Standard Version	Screw-on	Front-Side	2-pole	non-illuminated	
DC12.1122.001	1	Standard Version	Screw-on	Front-Side	2-pole	illuminated	red
DC12.2122.001	2	Standard Version	Screw-on	Front-Side	2-pole	illuminated	red
DC12.3122.001	4	Standard Version	Screw-on	Front-Side	2-pole	illuminated	red
DC12.4122.001	6	Standard Version	Screw-on	Front-Side	2-pole	illuminated	red
DC12.5122.001	10	Standard Version	Screw-on	Front-Side	2-pole	illuminated	red
DC12.1132.001	1	Standard Version	Screw-on	Front-Side	2-pole	illuminated	green

Order Number	Rated Current [A]	Filter-Type	Panel mounting	Mounting side	Line switch	Illumination	Color
DC12.2132.001	2	Standard Version	Screw-on	Front-Side	2-pole	illuminated	green
DC12.3132.001	4	Standard Version	Screw-on	Front-Side	2-pole	illuminated	green
DC12.4132.001	6	Standard Version	Screw-on	Front-Side	2-pole	illuminated	green
DC12.5132.001	10	Standard Version	Screw-on	Front-Side	2-pole	illuminated	green
DC12.1102.203	1	Standard Version	Screw-on	Rear-Side	1-pole	non-illuminated	
DC12.2102.203	2	Standard Version	Screw-on	Rear-Side	1-pole	non-illuminated	
DC12.3102.203	4	Standard Version	Screw-on	Rear-Side	1-pole	non-illuminated	
DC12.4102.203	6	Standard Version	Screw-on	Rear-Side	1-pole	non-illuminated	
DC12.5102.203	10	Standard Version	Screw-on	Rear-Side	1-pole	non-illuminated	
DC12.1102.201	1	Standard Version	Screw-on	Rear-Side	2-pole	non-illuminated	
DC12.2102.201	2	Standard Version	Screw-on	Rear-Side	2-pole	non-illuminated	
DC12.3102.201	4	Standard Version	Screw-on	Rear-Side	2-pole	non-illuminated	
DC12.4102.201	6	Standard Version	Screw-on	Rear-Side	2-pole	non-illuminated	
DC12.5102.201	10	Standard Version	Screw-on	Rear-Side	2-pole	non-illuminated	
DC12.1202.103	1	Medical Version (M5)	Snap-In	Front-Side	1-pole	non-illuminated	
DC12.2202.103	2	Medical Version (M5)	Snap-In	Front-Side	1-pole	non-illuminated	
DC12.3202.103	4	Medical Version (M5)	Snap-In	Front-Side	1-pole	non-illuminated	
DC12.4202.103	6	Medical Version (M5)	Snap-In	Front-Side	1-pole	non-illuminated	
DC12.5202.103	10	Medical Version (M5)	Snap-In	Front-Side	1-pole	non-illuminated	
DC12.1222.103	1	Medical Version (M5)	Snap-In	Front-Side	1-pole	illuminated	red
DC12.2222.103	2	Medical Version (M5)	Snap-In	Front-Side	1-pole	illuminated	red
DC12.3222.103	4	Medical Version (M5)	Snap-In	Front-Side	1-pole	illuminated	red
DC12.4222.103	6	Medical Version (M5)	Snap-In	Front-Side	1-pole	illuminated	red
DC12.5222.103	10	Medical Version (M5)	Snap-In	Front-Side	1-pole	illuminated	red
DC12.1232.103	1	Medical Version (M5)	Snap-In	Front-Side	1-pole	illuminated	green
DC12.2232.103	2	Medical Version (M5)	Snap-In	Front-Side	1-pole	illuminated	green
DC12.3232.103	4	Medical Version (M5)	Snap-In	Front-Side	1-pole	illuminated	green
DC12.4232.103	6	Medical Version (M5)	Snap-In	Front-Side	1-pole	illuminated	green
DC12.5232.103	10	Medical Version (M5)	Snap-In	Front-Side	1-pole	illuminated	green
DC12.1202.101	1	Medical Version (M5)	Snap-In	Front-Side	2-pole	non-illuminated	
DC12.2202.101	2	Medical Version (M5)	Snap-In	Front-Side	2-pole	non-illuminated	
DC12.3202.101	4	Medical Version (M5)	Snap-In	Front-Side	2-pole	non-illuminated	
DC12.4202.101	6	Medical Version (M5)	Snap-In	Front-Side	2-pole	non-illuminated	
DC12.5202.101	10	Medical Version (M5)	Snap-In	Front-Side	2-pole	non-illuminated	
DC12.1222.101	1	Medical Version (M5)	Snap-In	Front-Side	2-pole	illuminated	red
DC12.2222.101	2	Medical Version (M5)	Snap-In	Front-Side	2-pole	illuminated	red
DC12.3222.101	4	Medical Version (M5)	Snap-In	Front-Side	2-pole	illuminated	red
DC12.4222.101	6	Medical Version (M5)	Snap-In	Front-Side	2-pole	illuminated	red
DC12.5222.101	10	Medical Version (M5)	Snap-In	Front-Side	2-pole	illuminated	red
DC12.1232.101	1	Medical Version (M5)	Snap-In	Front-Side	2-pole	illuminated	green
DC12.2232.101	2	Medical Version (M5)	Snap-In	Front-Side	2-pole	illuminated	green
DC12.3232.101	4	Medical Version (M5)	Snap-In	Front-Side	2-pole	illuminated	green
DC12.4232.101	6	Medical Version (M5)	Snap-In	Front-Side	2-pole	illuminated	green
DC12.5232.101	10	Medical Version (M5)	Snap-In	Front-Side	2-pole	illuminated	green
DC12.1202.003	1	Medical Version (M5)	Screw-on	Front-Side	1-pole	non-illuminated	
DC12.2202.003	2	Medical Version (M5)	Screw-on	Front-Side	1-pole	non-illuminated	
DC12.3202.003	4	Medical Version (M5)	Screw-on	Front-Side	1-pole	non-illuminated	
DC12.4202.003	6	Medical Version (M5)	Screw-on	Front-Side	1-pole	non-illuminated	
DC12.5202.003	10	Medical Version (M5)	Screw-on	Front-Side	1-pole	non-illuminated	
DC12.1222.003	1	Medical Version (M5)	Screw-on	Front-Side	1-pole	illuminated	red
DC12.2222.003	2	Medical Version (M5)	Screw-on	Front-Side	1-pole	illuminated	red
DC12.3222.003	4	Medical Version (M5)	Screw-on	Front-Side	1-pole	illuminated	red
DC12.4222.003	6	Medical Version (M5)	Screw-on	Front-Side	1-pole	illuminated	red
DC12.5222.003	10	Medical Version (M5)	Screw-on	Front-Side	1-pole	illuminated	red
DC12.1232.003	1	Medical Version (M5)	Screw-on	Front-Side	1-pole	illuminated	green
DC12.2232.003	2	Medical Version (M5)	Screw-on	Front-Side	1-pole	illuminated	green
DC12.3232.003	4	Medical Version (M5)	Screw-on	Front-Side	1-pole	illuminated	green

DC12

POWER ENTRY MODULES WITH LINE FILTER



Order Number	Rated Current [A]	Filter-Type	Panel mounting	Mounting side	Line switch	Illumination	Color
DC12.4232.003	6	Medical Version (M5)	Screw-on	Front-Side	1-pole	illuminated	green
DC12.5232.003	10	Medical Version (M5)	Screw-on	Front-Side	1-pole	illuminated	green
DC12.1202.001	1	Medical Version (M5)	Screw-on	Front-Side	2-pole	non-illuminated	
DC12.2202.001	2	Medical Version (M5)	Screw-on	Front-Side	2-pole	non-illuminated	
DC12.3202.001	4	Medical Version (M5)	Screw-on	Front-Side	2-pole	non-illuminated	
DC12.4202.001	6	Medical Version (M5)	Screw-on	Front-Side	2-pole	non-illuminated	
DC12.5202.001	10	Medical Version (M5)	Screw-on	Front-Side	2-pole	non-illuminated	
DC12.1222.001	1	Medical Version (M5)	Screw-on	Front-Side	2-pole	illuminated	red
DC12.2222.001	2	Medical Version (M5)	Screw-on	Front-Side	2-pole	illuminated	red
DC12.3222.001	4	Medical Version (M5)	Screw-on	Front-Side	2-pole	illuminated	red
DC12.4222.001	6	Medical Version (M5)	Screw-on	Front-Side	2-pole	illuminated	red
DC12.5222.001	10	Medical Version (M5)	Screw-on	Front-Side	2-pole	illuminated	red
DC12.1232.001	1	Medical Version (M5)	Screw-on	Front-Side	2-pole	illuminated	green
DC12.2232.001	2	Medical Version (M5)	Screw-on	Front-Side	2-pole	illuminated	green
DC12.3232.001	4	Medical Version (M5)	Screw-on	Front-Side	2-pole	illuminated	green
DC12.4232.001	6	Medical Version (M5)	Screw-on	Front-Side	2-pole	illuminated	green
DC12.5232.001	10	Medical Version (M5)	Screw-on	Front-Side	2-pole	illuminated	green
DC12.1202.201	1	Medical Version (M5)	Screw-on	Rear-Side	2-pole	non-illuminated	
DC12.2202.201	2	Medical Version (M5)	Screw-on	Rear-Side	2-pole	non-illuminated	
DC12.3202.201	4	Medical Version (M5)	Screw-on	Rear-Side	2-pole	non-illuminated	
DC12.4202.201	6	Medical Version (M5)	Screw-on	Rear-Side	2-pole	non-illuminated	
DC12.5202.201	10	Medical Version (M5)	Screw-on	Rear-Side	2-pole	non-illuminated	

Packaging unit

10 Pcs

Accessories

see page 18

Actual information about approvals can be found on
<http://www.schurter.com/approvals>



Screw-on mounting
from front side
with voltage selector



Snap-in mounting
from front side
without voltage selector



New
Screw-on mounting
from rear side
without voltage selector



Plug removal necessary for fuse replacement

Description

- Panel Mount:
Screw-on version from front or rear side, snap-in version from front side
- 4 Functions:
Inlet Protection class I, Fuseholder for fuse-links 5 x 20 mm 1- or 2-pole, with or without voltage selector (step switch), Line filter in standard and medical version
- Quick connect terminals or wires
- Alternative: version without line filter KEA

Characteristics

- Rear side mounting for efficient costsaving assembly
Suitable for assembly in metal plated plastic housings
- All single elements are already wired
- Plug removal necessary for fuse-link replacement
The fuse drawer "Fingergrip" can be removed by hand
For added safety "Extra-Safe" fuse drawers are available
Fuse drawer meets requirements of medical standard IEC/EN 60601-1
The fuseholder is accessible from the equipment front
- Qualified for use in equipment according IEC/EN 60950

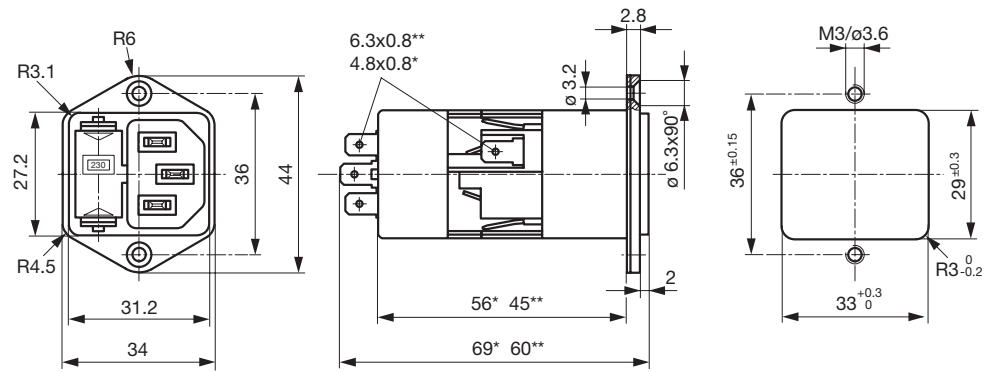
Technical Data

Ratings IEC	1 - 10 A @ Ta 40 °C / 250 VAC; 50 Hz
Ratings UL/CSA	1 - 10 A @ Ta 40 °C / 125 VAC; 60 Hz
Leakage current	standard < 0.5 mA (250 V / 60 Hz) medical < 5 µA (250 V / 60 Hz)
Dielectric Strength	> 1.7 kVDC between L-N > 2.7 kVDC between L/N-PE Test voltage (2 sec)
Allowable operation temp.	-25 °C to 85 °C
Climatic Category	25/085/21, IEC 60068-1
Degree of Protection	from front side IP 40 acc. to IEC 60529
Protection Class	Suitable for appliances with protection class I acc. to IEC 61140
Terminals	Quick connect terminals or wires
Panel Thickness s	Screw-on: max 8 mm Mounting screw torque max 0.5 Nm Snap-In: 0.8 mm to 3 mm
Material: Housing	Thermoplastic, Black, UL 94V-0

Appliance-inlet /-outlet	C14 acc. to IEC/EN 60320-1, UL 498, CSA C22.2 no. 42 (for cold condition) pin-temperature 70 °C, 10 A, Protection class I
Fuseholder	1- or 2-pole, Shocksafe category PC2 acc. to IEC 60127-6, for fuse-links 5 x 20 mm
Rated Power Acceptance @ Ta 23 °C	5 x 20: 2 W (1-pole)/ 1.6 W (2-pole) per pole
Power acceptance @ Ta > 23°C	Admissible power acceptance at higher ambient temperature see derating curves. Take note of the information on page 14
Voltage selector	optional, step, 3 digits
Line filter	Standard and medical version, IEC 60939, IEC 60601-1, UL 1283, UL 544, EN 133 200, CSA C22.2 no. 8 Technical details see page 14

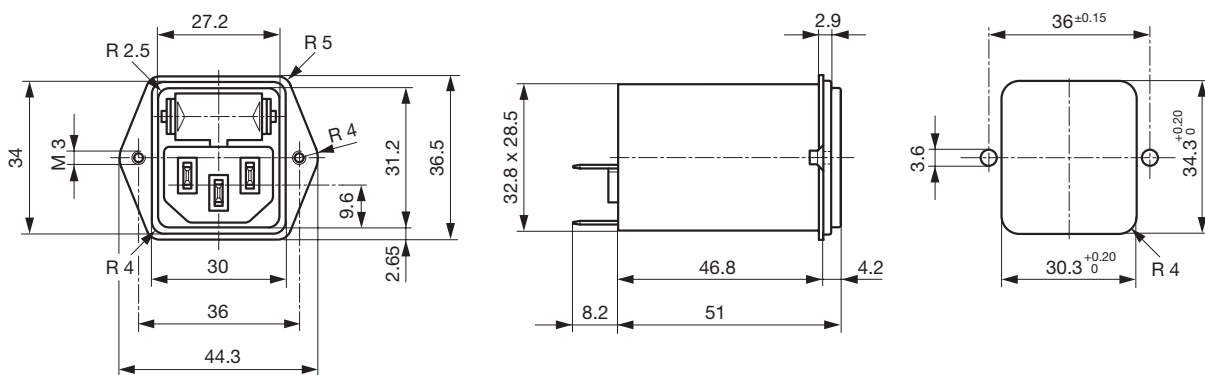
Dimensions

Screw-on mounting from front side

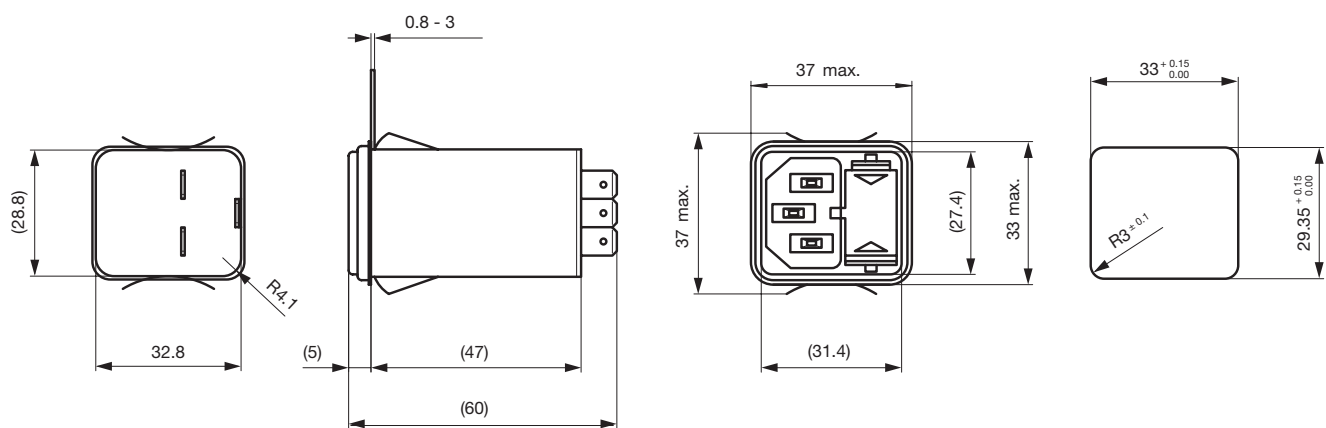


* with voltage selector
 ** without voltage selector

Screw-on mounting from rear side



Snap-in mounting

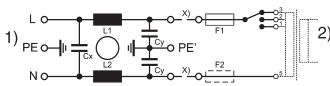


Technical Data of Filter-Components

Rated Current [A]	Filter-Type	Inductances L [mH]	Capacitance CX [nF]	Capacitance CY [nF]	R [MΩ]
1	Standard Version	2 x 10	68	2.2	
2	Standard Version	2 x 4	68	2.2	
4	Standard Version	2 x 1.5	68	2.2	
6	Standard Version	2 x 0.8	68	2.2	
10	Standard Version	2 x 0.3	68	2.2	
1	Medical Version (M5)	2 x 10	68		1
2	Medical Version (M5)	2 x 4	68		1
4	Medical Version (M5)	2 x 1.5	68		1
6	Medical Version (M5)	2 x 0.8	68		1
10	Medical Version (M5)	2 x 0.3	68		1
2	Medical Version (M80)	2 x 4	68	0.47	1
4	Medical Version (M80)	2 x 1.5	68	0.47	1

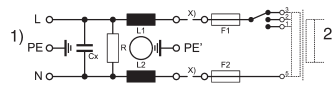
Diagrams

Standard version with fuseholder 1- or 2-pole



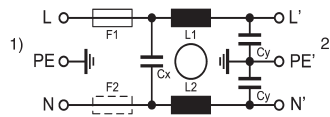
1) Line; 2) Load; x) external connection to be made by the customer

Medical version (M5) with fuseholder 2-pole



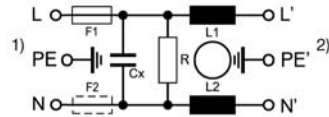
1) Line; 2) Load; x) external connection to be made by customer

Standard version without voltage selector



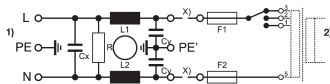
1) Line
2) Load

Medical version (M5) without voltage selector



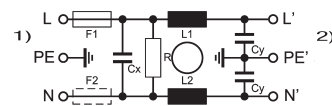
1) Line
2) Load

Medical version (M80) with voltage selector



1) Line; 2) Load; x) external connection to be made by customer

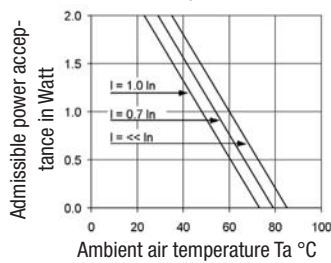
Medical version (M80) without voltage selector



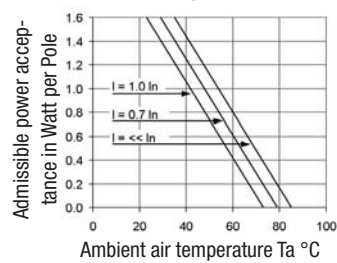
1) Line
2) Load

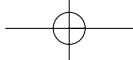
Derating curves

1-pole



2-pole



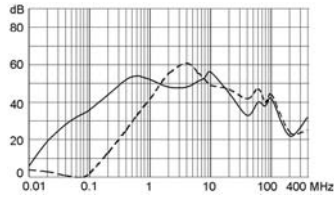


Attenuation loss

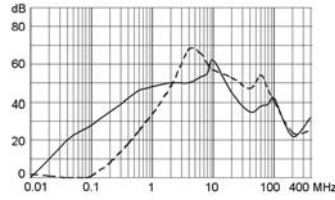
--- differential mode ____ common mode

Standard version

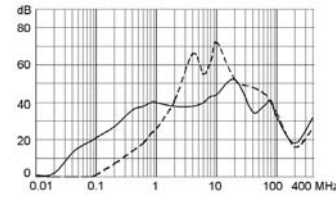
1 A



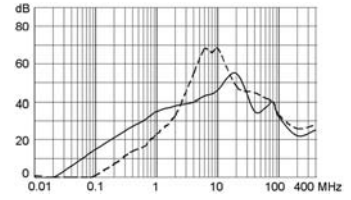
2 A



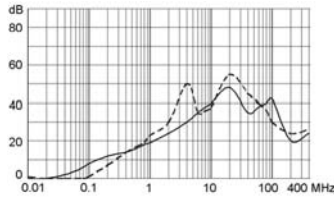
4 A



6 A

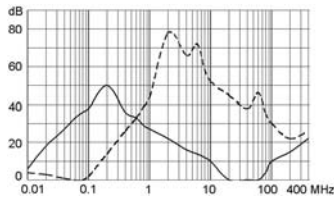


10 A

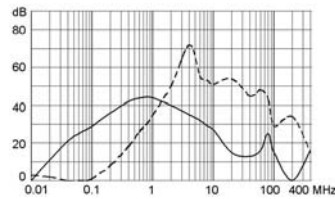


Medical version (M5)

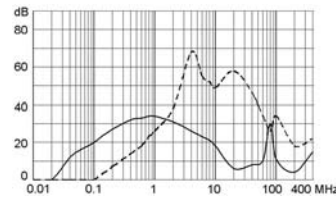
1 A



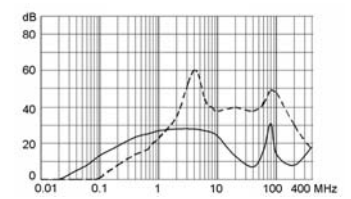
2 A



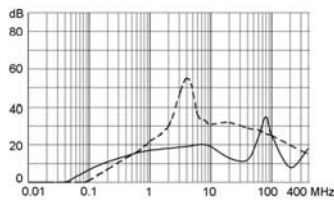
4 A



6 A

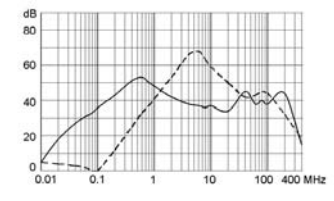


10 A

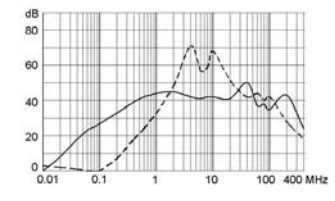


Medical version (M80)

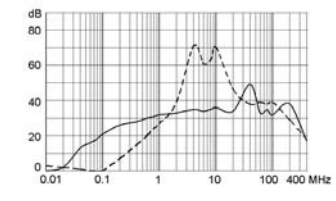
1 A



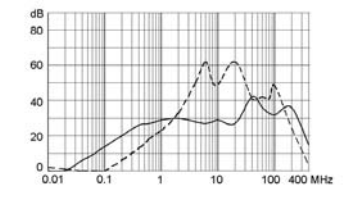
2 A



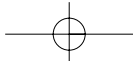
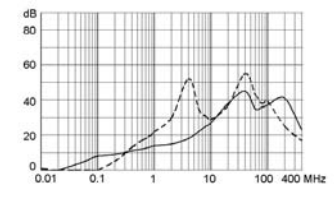
4 A



6 A



10 A



Variants

Fuse drawer must be ordered separately (See accessories).

Order Number	Rated Current [A]	Filter-Type	Panel mounting	Mounting side	Fuseholder	Terminals	Voltage selector
4301.6011	1	Standard Version	Snap-In	Front-Side	1-pole	Quick connect terminals 6.3 x 0.8 mm	
4301.6012	2	Standard Version	Snap-In	Front-Side	1-pole	Quick connect terminals 6.3 x 0.8 mm	
4301.6013	4	Standard Version	Snap-In	Front-Side	1-pole	Quick connect terminals 6.3 x 0.8 mm	
4301.6014	6	Standard Version	Snap-In	Front-Side	1-pole	Quick connect terminals 6.3 x 0.8 mm	
4301.6015	10	Standard Version	Snap-In	Front-Side	1-pole	Quick connect terminals 6.3 x 0.8 mm	
4301.6001	1	Standard Version	Snap-In	Front-Side	2-pole	Quick connect terminals 6.3 x 0.8 mm	
4301.6002	2	Standard Version	Snap-In	Front-Side	2-pole	Quick connect terminals 6.3 x 0.8 mm	
4301.6003	4	Standard Version	Snap-In	Front-Side	2-pole	Quick connect terminals 6.3 x 0.8 mm	
4301.6004	6	Standard Version	Snap-In	Front-Side	2-pole	Quick connect terminals 6.3 x 0.8 mm	
4301.5051	1	Standard Version	Screw-on	Front-Side	1-pole	Quick connect terminals 4.8 x 0.8 mm	3 digits
4301.5052	2	Standard Version	Screw-on	Front-Side	1-pole	Quick connect terminals 4.8 x 0.8 mm	3 digits
4301.5053	4	Standard Version	Screw-on	Front-Side	1-pole	Quick connect terminals 4.8 x 0.8 mm	3 digits
4301.5054	6	Standard Version	Screw-on	Front-Side	1-pole	Quick connect terminals 4.8 x 0.8 mm	3 digits
4301.5055	10	Standard Version	Screw-on	Front-Side	1-pole	Quick connect terminals 4.8 x 0.8 mm	3 digits
4301.5011	1	Standard Version	Screw-on	Front-Side	1-pole	Quick connect terminals 6.3 x 0.8 mm	
4301.5012	2	Standard Version	Screw-on	Front-Side	1-pole	Quick connect terminals 6.3 x 0.8 mm	
4301.5013	4	Standard Version	Screw-on	Front-Side	1-pole	Quick connect terminals 6.3 x 0.8 mm	
4301.5014	6	Standard Version	Screw-on	Front-Side	1-pole	Quick connect terminals 6.3 x 0.8 mm	
4301.5015	10	Standard Version	Screw-on	Front-Side	1-pole	Quick connect terminals 6.3 x 0.8 mm	
4301.5041	1	Standard Version	Screw-on	Front-Side	2-pole	Quick connect terminals 4.8 x 0.8 mm	3 digits
4301.5042	2	Standard Version	Screw-on	Front-Side	2-pole	Quick connect terminals 4.8 x 0.8 mm	3 digits
4301.5043	4	Standard Version	Screw-on	Front-Side	2-pole	Quick connect terminals 4.8 x 0.8 mm	3 digits
4301.5044	6	Standard Version	Screw-on	Front-Side	2-pole	Quick connect terminals 4.8 x 0.8 mm	3 digits
4301.5045	10	Standard Version	Screw-on	Front-Side	2-pole	Quick connect terminals 4.8 x 0.8 mm	3 digits
4301.5001	1	Standard Version	Screw-on	Front-Side	2-pole	Quick connect terminals 6.3 x 0.8 mm	
4301.5002	2	Standard Version	Screw-on	Front-Side	2-pole	Quick connect terminals 6.3 x 0.8 mm	
4301.5003	4	Standard Version	Screw-on	Front-Side	2-pole	Quick connect terminals 6.3 x 0.8 mm	
4301.5004	6	Standard Version	Screw-on	Front-Side	2-pole	Quick connect terminals 6.3 x 0.8 mm	
4301.5005	10	Standard Version	Screw-on	Front-Side	2-pole	Quick connect terminals 6.3 x 0.8 mm	
4301.7311	1	Standard Version	Screw-on	Rear-Side	1-pole	Wire 18 AWG	
4301.7011	1	Standard Version	Screw-on	Rear-Side	1-pole	Quick connect terminals 6.3 x 0.8 mm	
4301.7012	2	Standard Version	Screw-on	Rear-Side	1-pole	Quick connect terminals 6.3 x 0.8 mm	
4301.7013	4	Standard Version	Screw-on	Rear-Side	1-pole	Quick connect terminals 6.3 x 0.8 mm	
4301.7014	6	Standard Version	Screw-on	Rear-Side	1-pole	Quick connect terminals 6.3 x 0.8 mm	
4301.7015	10	Standard Version	Screw-on	Rear-Side	1-pole	Quick connect terminals 6.3 x 0.8 mm	
4301.7301	1	Standard Version	Screw-on	Rear-Side	2-pole	Wire 18 AWG	
4301.7001	1	Standard Version	Screw-on	Rear-Side	2-pole	Quick connect terminals 6.3 x 0.8 mm	
4301.7002	1	Standard Version	Screw-on	Rear-Side	2-pole	Quick connect terminals 6.3 x 0.8 mm	
4301.7002	2	Standard Version	Screw-on	Rear-Side	2-pole	Quick connect terminals 6.3 x 0.8 mm	
4301.7004	2	Standard Version	Screw-on	Rear-Side	2-pole	Quick connect terminals 6.3 x 0.8 mm	
4301.7003	4	Standard Version	Screw-on	Rear-Side	2-pole	Quick connect terminals 6.3 x 0.8 mm	
4301.7006	4	Standard Version	Screw-on	Rear-Side	2-pole	Quick connect terminals 6.3 x 0.8 mm	
4301.7004	6	Standard Version	Screw-on	Rear-Side	2-pole	Quick connect terminals 6.3 x 0.8 mm	
4301.7208	6	Standard Version	Screw-on	Rear-Side	2-pole	Quick connect terminals 6.3 x 0.8 mm	
4301.7005	10	Standard Version	Screw-on	Rear-Side	2-pole	Quick connect terminals 6.3 x 0.8 mm	
4301.7000	10	Standard Version	Screw-on	Rear-Side	2-pole	Quick connect terminals 6.3 x 0.8 mm	
4301.6201	1	Medical Version (M5)	Snap-In	Front-Side	2-pole	Quick connect terminals 6.3 x 0.8 mm	
4301.6203	2	Medical Version (M5)	Snap-In	Front-Side	2-pole	Quick connect terminals 6.3 x 0.8 mm	
4301.6205	4	Medical Version (M5)	Snap-In	Front-Side	2-pole	Quick connect terminals 6.3 x 0.8 mm	
4301.6207	4	Medical Version (M5)	Snap-In	Front-Side	2-pole	Quick connect terminals 6.3 x 0.8 mm	
4301.6209	4	Medical Version (M5)	Snap-In	Front-Side	2-pole	Quick connect terminals 6.3 x 0.8 mm	
4301.5217	6	Medical Version (M5)	Screw-on	Front-Side	1-pole	Quick connect terminals 6.3 x 0.8 mm	
4301.5241	1	Medical Version (M5)	Screw-on	Front-Side	2-pole	Quick connect terminals 4.8 x 0.8 mm	3 digits
4301.5243	2	Medical Version (M5)	Screw-on	Front-Side	2-pole	Quick connect terminals 4.8 x 0.8 mm	3 digits

Order Number	Rated Current [A]	Filter-Type	Panel mounting	Mounting side	Fuseholder	Terminals	Voltage selector
4301.5245	4	Medical Version (M5)	Screw-on	Front-Side	2-pole	Quick connect terminals 4.8 x 0.8 mm	3 digits
4301.5247	6	Medical Version (M5)	Screw-on	Front-Side	2-pole	Quick connect terminals 4.8 x 0.8 mm	3 digits
4301.5249	10	Medical Version (M5)	Screw-on	Front-Side	2-pole	Quick connect terminals 4.8 x 0.8 mm	3 digits
4301.5209	10	Medical Version (M5)	Screw-on	Front-Side	2-pole	Quick connect terminals 6.3 x 0.8 mm	
4301.7201	1	Medical Version (M5)	Screw-on	Rear-Side	2-pole	Quick connect terminals 6.3 x 0.8 mm	
4301.7203	2	Medical Version (M5)	Screw-on	Rear-Side	2-pole	Quick connect terminals 6.3 x 0.8 mm	
4301.7205	4	Medical Version (M5)	Screw-on	Rear-Side	2-pole	Quick connect terminals 6.3 x 0.8 mm	
4301.7207	4	Medical Version (M5)	Screw-on	Rear-Side	2-pole	Quick connect terminals 6.3 x 0.8 mm	
4301.7209	4	Medical Version (M5)	Screw-on	Rear-Side	2-pole	Quick connect terminals 6.3 x 0.8 mm	
4301.6206	4	Medical Version (M80)	Snap-In	Front-Side	2-pole	Quick connect terminals 6.3 x 0.8 mm	
4301.5244	2	Medical Version (M80)	Screw-on	Front-Side	2-pole	Quick connect terminals 4.8 x 0.8 mm	3 digits
4301.5206	4	Medical Version (M80)	Screw-on	Front-Side	2-pole	Quick connect terminals 6.3 x 0.8 mm	

Packaging unit

10 Pcs

Accessories

see page 18

ACCESSORIES

Order Numbers fuse drawer (Fingerrip and Extra-Safe) for KFA

Voltage markings	Type	Type		1-pole + spare fuse case	2-pole with shorting bar in the neutral side
		1-pole	2-pole		
«XX» see table 1	Fingerrip	4301.1214.XX	4301.1014.XX	4301.2814.XX	4301.3536.XX
«XX»	Extra-Safe	4301.1224.XX	4301.1024.XX	4301.2824.XX	4301.3537.XX
without voltage selector	Fingerrip	4301.1405	4301.1401	4301.1409	4301.1413
without voltage selector	Extra-Safe	4301.1407	4301.1403	4301.1411	4301.1415

* only 1-/2-pole

Table 1

Index XX	Voltage markings/terminal no			
	1	2	3	4
01	110	150	220	-
02	120	-	240	-
03	110	-	220	-
04	115	-	220	-
05	110	-	230	-
06	115	-	230	-
07	100	110	220	240
08	100	120	220	240
09	110	-	117	-
10	220	-	240	-
11	120	220	240	-
12	110	220	240	-

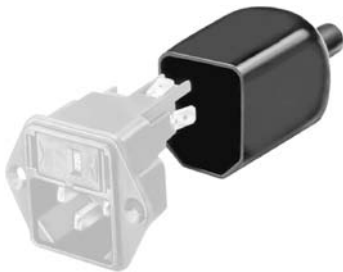
Table 1

Index XX	Voltage markings/terminal no			
	1	2	3	4
13	115	220	240	-
14	-	-	-	-
15	100	120	220	-
16	50 Hz	-	60 Hz	-
17	220	-	110	-
18	110	240	220	-
19	117	220	240	-
20	100	110	127	230
21	110	120	220	-
22	110	220	230	-
23	100	115	220	240
24	115	230	240	-

Insulating cover for DC12, KFA, C20F

The terminals of the Schurter appliance couplers can be protected against unintentional contact by the use of an insulation cover.

They are made of flexible thermoplastic (UL 94V-0, black) and can be easily mounted from the rear to the corresponding appliance couplers.



Order Numbers

Order Numbers	suitable for
0859.0047	C20F
0859.0075	KFA, DC12

Cord retaining kits for DC12, KFA, C20F

For protection against loosening or accidental disconnection of the plug connector. Can also be mounted later.

Horizontal flanged components are secured to the panel using the kit supplied. Vertical flanged or snap-in components require additional drilling for the cord retaining kit as shown in the diagrams below.

Each cord retaining kit consists of:

- 1 Stainless steel retaining clip
- 2 Nickel plated brass pillars
- 2 Nickel plated brass nuts
- 2 Nickel plated beryllium copper crinkle washers



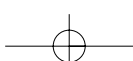
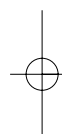
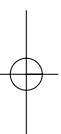
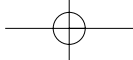
Cut-aways or countersinks on pillars to face inwards.

Order Numbers Connector suitable for KFA and DC12

Order Numbers	Connector	suitable for KFA and DC12		
		Front side mounting screw on	Rear side mounting screw on	Front side mounting snap
4700.0001	4782.0000		X	X
	4782.0100			
4700.0002	4782.0000	X		
	4782.0100			

Order Numbers Connector suitable for C20F

Order Numbers	Connector	suitable for C20F		
		Front side mounting screw on	Rear side mounting screw on	Rear side mounting snap in
4700.0010	4795.0000	X		
4700.0011	4795.0000		X	X





THE SCHURTER RANGE AT A GLANCE



FUSES



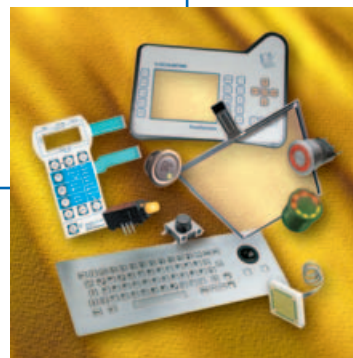
CONNECTORS



CIRCUIT BREAKERS
FOR EQUIPMENT



INPUT SYSTEMS



SCHURTER develops, manufactures and markets components for the electrical and electronics industries worldwide. Our business sectors comprise fuses, connectors, circuit-breakers for equipment, and input systems.

Please find detailed information on the various **SCHURTER** product groups in our catalogs.